



E-DESK

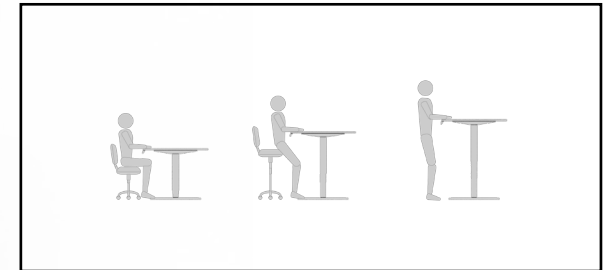
Height Adjustable Range





E-DESK

Introduction to Height Adjustable Technology



Height adjustable or 'sit / stand' desks are the new standard for ergonomic furniture in today's office space environment. This technology affords you both comfort and optimal posture throughout the day; Helping to prevent fatigue, improve your output & avoid injury. Powered, telescopic legs raise & lower the work top to your desired height effortlessly. With three memory positions you're able to shift from sit to stand and hundreds of positions in between in seconds. Transitioning between memorised positions is efficient and easy allowing you to maintain your productivity and flow uninterrupted.

Melbourne Desk Company now offer a wide range of variable height desking solutions that cater to all styles and budgets including complete office suites specifically designed to match seamlessly with your new E-DESK.



E-DESK ESSENTIAL
Pictured in Fox Teakwood

L: 1800, 2100, 2400

D: 700(MIN)

H: 650(MIN) 1300(MAX)

Frame available in both black & white

Contrasting edging available

Digital LED Controller with 3 programmable
memory presets & Timer Reminder

Adjustable Feet

Safety Collision Avoidance System



E-DESK ESSENTIAL SPLAY

Pictured in Natural Walnut

Also available in Curved Splay

L: 1800, 2100

W: 1800

D: 700(MIN)

H: 650(MIN) 1300(MAX)

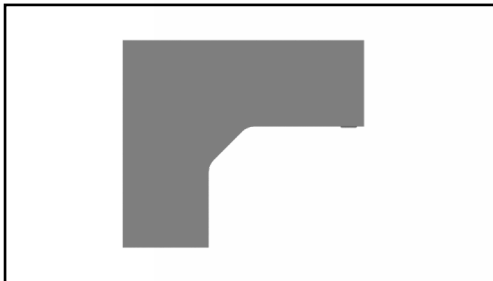
Frame available in both black & white

Contrasting edging available

Digital LED Controller with 3 programmable
memory presets & Timer Reminder

Adjustable feet

Safety Collision Avoidance System



E-DESK EXECUTIVE OFFICE

Pictured in Black over Sublime Teak

OVERALL DIMENSIONS

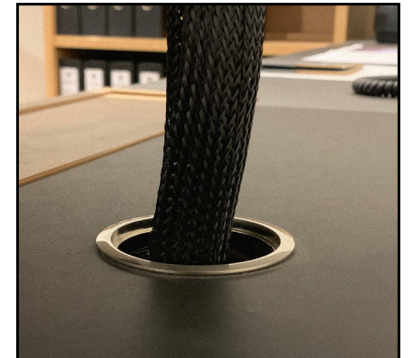
L: 3000

W: 2400

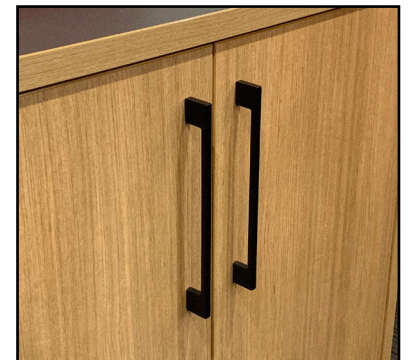
H: 650(MIN) 1300(MAX)



DIGITAL LED CONTROLLER



UNIQUE CABLE MANAGEMENT



HIGHLY CUSTOMISABLE



E-DESK EXECUTIVE

Pictured in Jarrah Legno

Available with or without return space

L: 1800, 2100, 2400

W: 900

H: 650(MIN) 1300(MAX)

Frame available in both black & white

Contrasting top & edging colours available

Digital LED Controller with 3 programmable memory presets & Timer Reminder

Safety Collision Avoidance System



** OVERHANG WHEN
RETURN IS OPTIONED



EXECUTIVE LOW RIDERS

Pictured in Sublime Teak



W: 470

D: 560

H: 580(1P+1S+1F)

530(1S+1F)

Soft close drawers*
White or black handles available

**Pencil Utility Drawer Not Soft Close*

EXECUTIVE REAR STORAGE

Pictured in Sublime Teak

L: 2400

W: 450

H: 900

Chair storage
Soft close doors
Black or white handles available
Custom top & edging colours available



EXECUTIVE RETURN CREDENZA

Pictured in Sublime Teak



L: 1950

W: 600

H: 530

Soft close doors & drawers
Black or white handles available
Custom top & edging colours available



E-DESK

Additional Information

PRODUCT INFORMATION

- All tops 25mm
- Available in Standard Colours Range
- Frames come with a basic cable tray
- Frames & handles available in black or white
- Executive offers customizable top & edging colours
- Essential offers customizable edging colours

ACCESSORY OPTIONS

- MDC Scallop
- 60mm Cable Entry
- 80mm Cable Entry
- Single Tier Cable Tray
- Double Tier Cable Tray

WARRANTY

- **Top** - 10 Year
- **Frame** - 10 Year (*Structural*)
- **Electronic Motor** - 3 Year

DISCLAIMER

Please note that all renders are only indicative of Laminex & Polytec Commercial Palettes. Swatch samples should be used for true likeness. MDC reserves the right to change specification without notice.

ISO 9001 Accredited Quality Management System
ISO 14001 Accredited Environmental Management System



Pictured in Black with white edge, handles and frame

STANDARD COLOURS

POLAR WHITE / WHITE 200	GHOSTGUM	PARCHMENT	MOLESKIN	ALASKAN
ARIES	FOX	TORNADO	OYSTER / LAVA GREY	FOX TEAKWOOD
DANSK MAPLE	ROCK MAPLE	RAW BIRCHPLY	MILKWOOD	SEASONED OAK
OYSTER LINEA	POLYTEC SOFT WALNUT	CLASSIC OAK	CURLY BIRCH	YOUNG / SELECT BEECH
SILVER ASH	ELEGANT OAK	SUBLIME TEAK	POLYTEC NATURAL OAK	RURAL OAK
NATURAL WALNUT	MILANO WALNUT	JARRAH LEGNO	LICORICE LINEA	LUSTROUS ELM
BLACKENED ELM	BLACK BIRCHPLY	BURNISHED WOOD	TERRIL	NEW GRAPHITE
FOSSIL	GREYSTONE	BATTALION	CHARCOAL	BLACK
ZINCWORKS	MANDARIN	OLYMPIA YELLOW / BLUE	JUICY	PILLARBOX